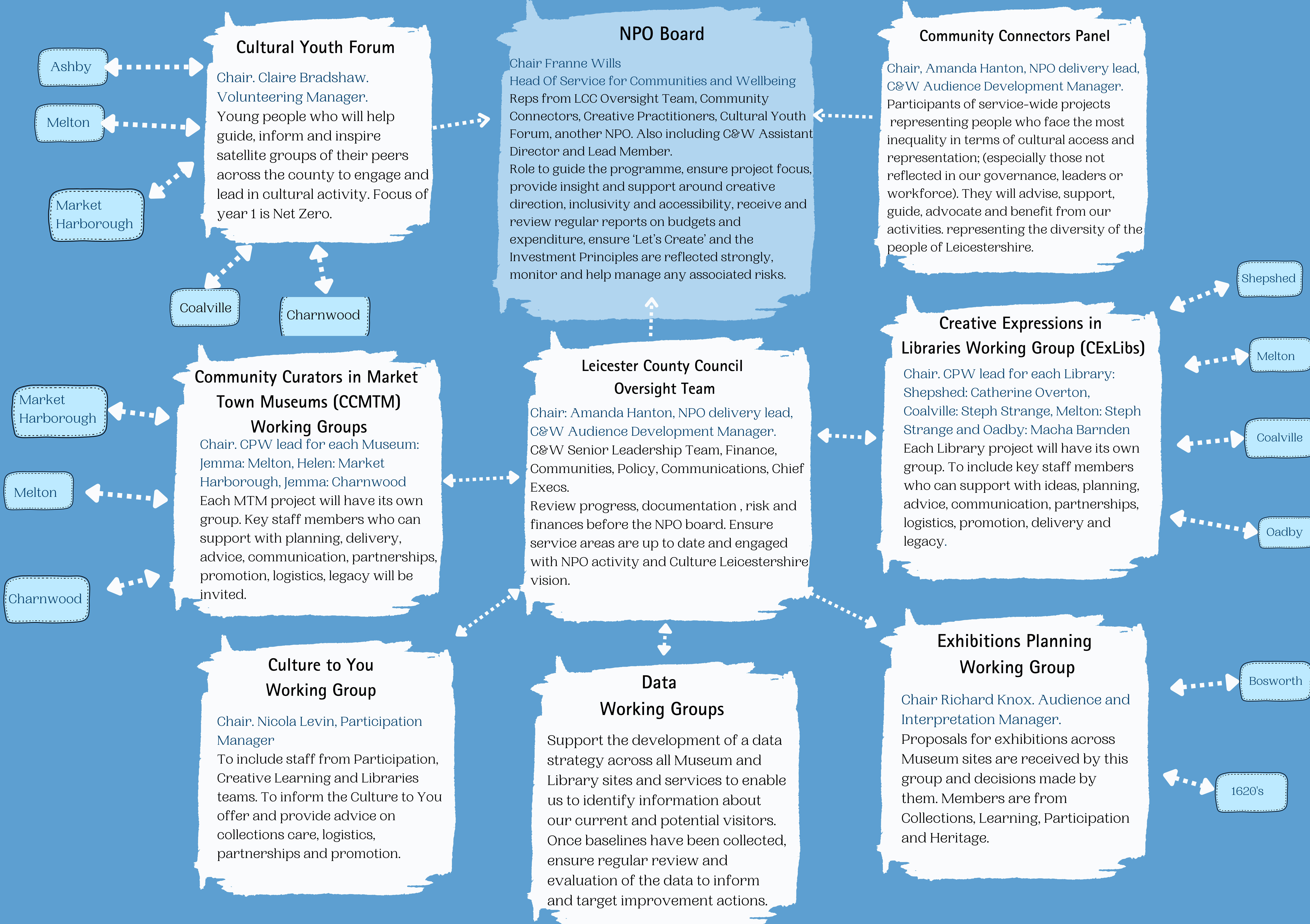


Culture Leicestershire, National Portfolio Organisation (NPO) Governance



Cultural Youth Forum

Chair. Claire Bradshaw. Volunteering Manager. Young people who will help guide, inform and inspire satellite groups of their peers across the county to engage and lead in cultural activity. Focus of year 1 is Net Zero.

Ashby

Melton

Market Harborough

Coalville

Charnwood

NPO Board

Chair Franne Wills
Head Of Service for Communities and Wellbeing
Reps from LCC Oversight Team, Community Connectors, Creative Practitioners, Cultural Youth Forum, another NPO. Also including C&W Assistant Director and Lead Member.
Role to guide the programme, ensure project focus, provide insight and support around creative direction, inclusivity and accessibility, receive and review regular reports on budgets and expenditure, ensure 'Let's Create' and the Investment Principles are reflected strongly, monitor and help manage any associated risks.

Community Connectors Panel

Chair, Amanda Hanton, NPO delivery lead, C&W Audience Development Manager. Participants of service-wide projects representing people who face the most inequality in terms of cultural access and representation; (especially those not reflected in our governance, leaders or workforce). They will advise, support, guide, advocate and benefit from our activities. representing the diversity of the people of Leicestershire.

Community Curators in Market Town Museums (CCMTM) Working Groups

Chair. CPW lead for each Museum: Jemma: Melton, Helen: Market Harborough, Jemma: Charnwood
Each MTM project will have its own group. Key staff members who can support with planning, delivery, advice, communication, partnerships, promotion, logistics, legacy will be invited.

Market Harborough

Melton

Charnwood

Leicester County Council Oversight Team

Chair: Amanda Hanton, NPO delivery lead, C&W Audience Development Manager. C&W Senior Leadership Team, Finance, Communities, Policy, Communications, Chief Execs.
Review progress, documentation, risk and finances before the NPO board. Ensure service areas are up to date and engaged with NPO activity and Culture Leicestershire vision.

Creative Expressions in Libraries Working Group (CExLibs)

Chair. CPW lead for each Library: Shepshed: Catherine Overton, Coalville: Steph Strange, Melton: Steph Strange and Oadby: Macha Barnden
Each Library project will have its own group. To include key staff members who can support with ideas, planning, advice, communication, partnerships, logistics, promotion, delivery and legacy.

Shepshed

Melton

Coalville

Oadby

Culture to You Working Group

Chair. Nicola Levin, Participation Manager
To include staff from Participation, Creative Learning and Libraries teams. To inform the Culture to You offer and provide advice on collections care, logistics, partnerships and promotion.

Data Working Groups

Support the development of a data strategy across all Museum and Library sites and services to enable us to identify information about our current and potential visitors. Once baselines have been collected, ensure regular review and evaluation of the data to inform and target improvement actions.

Exhibitions Planning Working Group

Chair Richard Knox. Audience and Interpretation Manager. Proposals for exhibitions across Museum sites are received by this group and decisions made by them. Members are from Collections, Learning, Participation and Heritage.

Bosworth

1620's