

Culture

Leicestershire

**Heritage, Libraries, Collections,
Learning and Participation**
Creating space to spark imagination,
celebrate communities and enhance wellbeing



NPO Investment Principles

Ambition and Quality

Dynamism

Environmental Responsibility

Inclusivity and Relevance

Ambition and Quality

“The public deserve the best in return for their investment, so the Arts Council is committed to the pursuit of the highest quality in everything we do.”

Our 3-year ambition 23-26

Be a responsive, reflective, dynamic culture service with community co-creation embedded in all we do.

Our measure of success will be physical and digital spaces where people engage with our collections, resources and services and shape their future development, accessibility and interpretation.

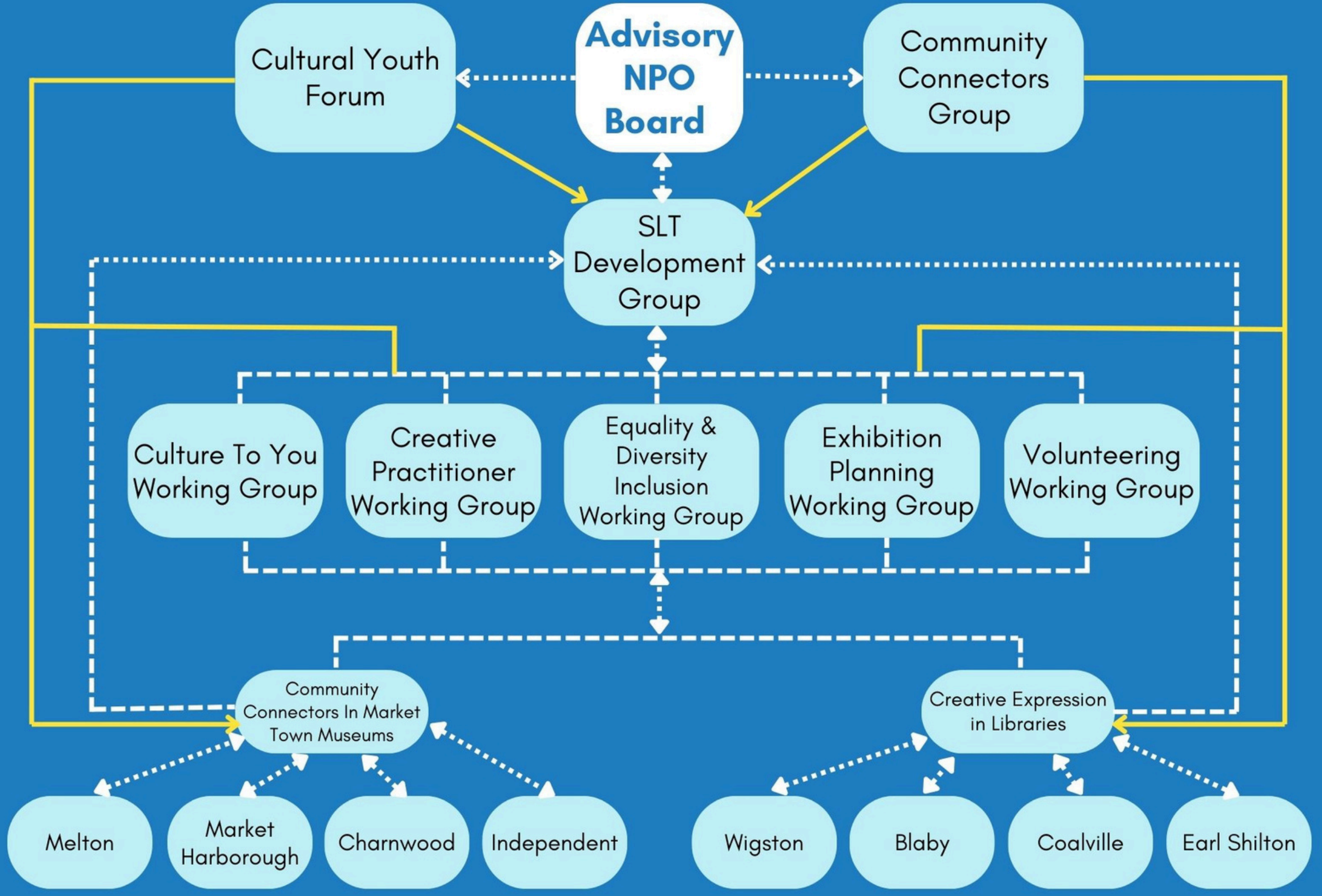
Co-creation
with

Culture

Leicestershire

Heritage, Libraries, Collections,
Learning and Participation

NPO Governance 24/25





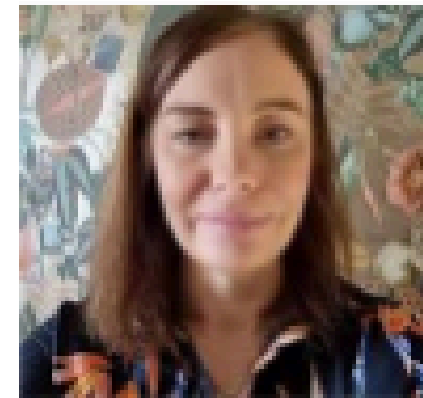
Franne Wills
Chair of NPO board
Head of Service -
Communities and
Wellbeing



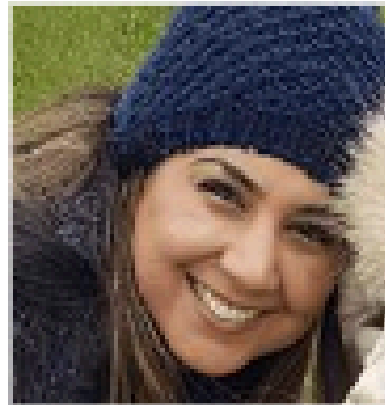
Daniel Mutibwa
Associate Prof - Creative
Industries and Digital
Culture - UON



Gillian Ramshaw
Assistant Head -
Leicestershire
Music



Amanda Hanton
Audience Development
Manager/NPO Lead



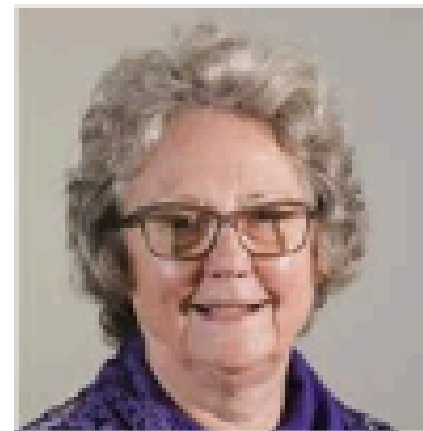
Sav Vaid
Go Getta CIC



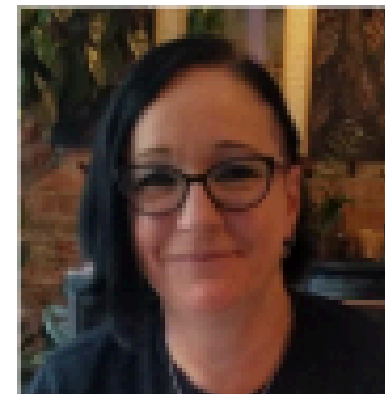
Abigail Grant
Arts Council
England



Inderjit Lahel
Assistant Director
- Adults and
Communities



Cllr Christine Radford
LCC Lead Member for
Adults and Communities



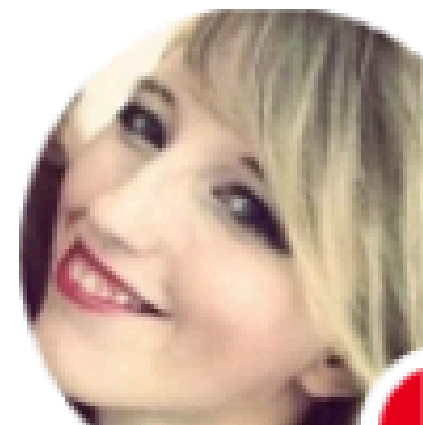
Emma Cook
Relationship
Manager



Cat Rogers
Strategic Tourism
Lead



Liz Moran
Regional Museum
Development Manager



Sarah Chetwyn
LCC Communications
and Digital Team
Manager



Farzana Hannan
Trustee of Hijaz
Trust/Community
Connector

[illegible]

Cultural Youth Forum

195 event participants

60 Cultural Youth Forum members

20 workshops

4 creative practitioners



University of
Nottingham
UK | CHINA | MALAYSIA



**Research
England**





Cromarty, Jackie

Jack Roscoe

Daniel Mutibwa

Marie Hobson

Giles Dring

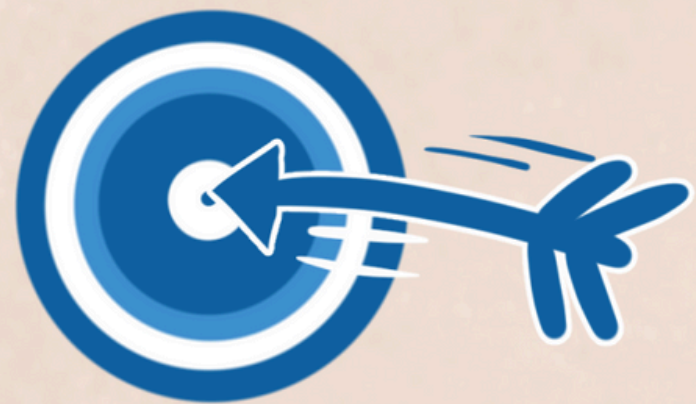
Indre R (s...

Amanda H...

Frost, Sop...



?? CO-CREATION ??

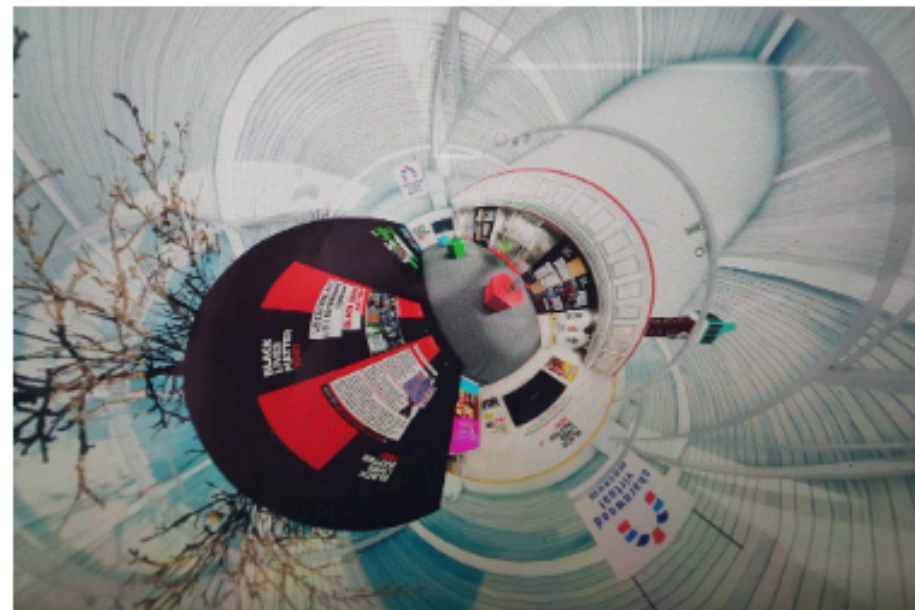


National Portfolio Organisation

As Culture Leicestershire, our Service which includes Museums, Libraries, Archives, Collections and Participation is delighted to be an Arts Council NPO 2023-2026. For more information about what this means please visit <https://www.artscouncil.org.uk/>

This page will be used to keep you, as a member of Culture Leicestershire, informed with updates, governance information, activities and plans

If you are new to this work please have a look at our jargon busting document [NPO terminology](#). [Jargon Busting](#)



Background and briefings

Keep up to date with service-wide NPO briefings and quarterly NPO programme updates

FIND OUT MORE



Governance

Local people, key partners and stakeholders will work alongside LCC staff to support, direct, advise and advocate for our work

FIND OUT MORE



Activity

Projects, events and workshops hosted at our Libraries, Museums and in communities

FIND OUT MORE

<https://www.cultureleicestershire.co.uk/about-us/national-portfolio-organisation/>